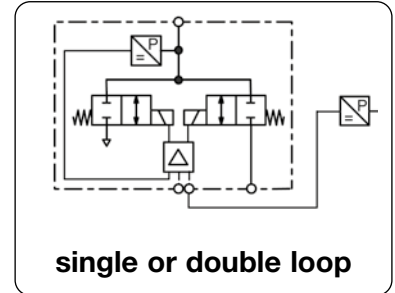


<b>Description</b>	Proportional pressure regulator with closed loop control technology for better control of pressurised gases. The instrument can be built as single closed loop or dual closed loop control valve. dry, lubricated or unlubricated and 20 µm filtered compressed air or non-corrosive gases constant outlet pressure at voltage drop		
<b>Media</b>	0-10 V, impedance 4.7 kΩ, ratio of internal to external relationship is 10% to 90%		
<b>Fail free</b>	15-24 V DC, residual ripple < 10%, with reverse voltage protection		
<b>Second loop</b>	0-10 V / 10 kΩ, 4-20 mA / 100 Ω		
<b>Supply voltage</b>	IP65		
<b>Impedance</b>	M12, 6-pin		
<b>Protection class</b>	24 W (985 mA) regulating, 2.4 W (100 mA) non-regulating		
<b>Electrical connector</b>	< 0.5% FS		
<b>Power consumption</b>	<b>Repeatability</b> < 0.5% FS		
<b>Linearity/Hysteresis</b>	zero, span, hysteresis		
<b>Adjustment</b>	<b>Mounting position</b> any, vibration-resistant		
<b>Temperature range</b>	0 °C to 70 °C / 32 °F to 158 °F		
<b>Material</b>	Ports: brass	Elastomer: FKM	Valves: stainless steel
	Transducer: silicon		



Dimensions	K <sub>v</sub> -value	Flow rate	Supply pressure	Accuracy	Connection thread	Pressure range	Order number
A B C	mm mm mm	(m³/h)	l/min*1	%	G	bar	

Proportional pressure regulator						0-10 V input and monitor signal, w. coupling socket supply voltage 24 V DC, single loop		PQH1	
76	122	8	0.016	280	75	0.5	G½	0 ... 40	PQH1EE-40
								0 ... 50	PQH1EE-50
								0 ... 60	PQH1EE-60
								0 ... 70	PQH1EE-70

Proportional pressure regulator						0-10 V input, monitor- and feedback signal, with coupling socket, supply volt. 24 V DC, double loop		PQH2	
76	122	8	0.016	280	75	0.5	G½	0 ... 40	PQH2EE-40
								0 ... 50	PQH2EE-50
								0 ... 60	PQH2EE-60
								0 ... 70	PQH2EE-70

## Special options, add the appropriate letter or number

4-20 mA	input and feedback signal	PQH . IC- ..
for oxygen		PQH . . . - .15
stainless steel manifold		PQH . . . - .SS

## Zubehör

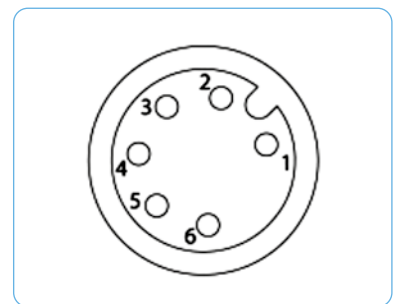
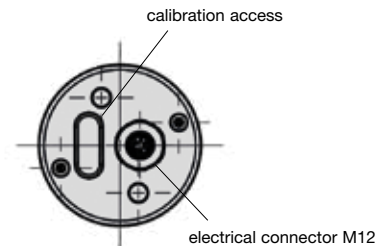
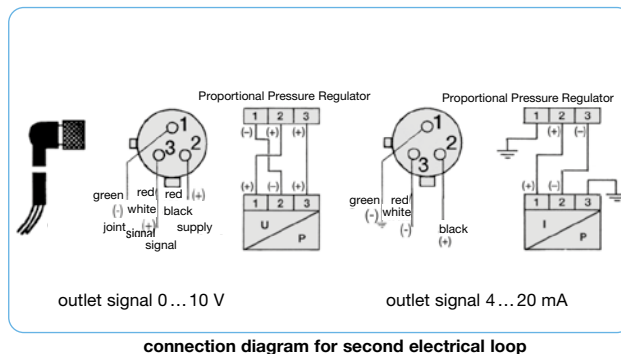
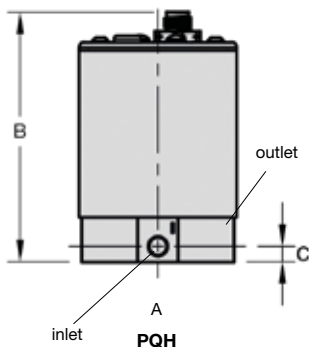
coupling socket	M12x1, 8-pin	straight	KM12-A8-0
	M12x1, 8-pin	angled	KM12-C8-0
	M12x1, 8-pin	with 2 m cable, 8x0.25 angled	KM12-C8-2
	M12x1, 8-pin	with 5 m cable, 8x0.25 angled	KM12-C8-5
coupling socket	½ UNF, 3-pin	with 0.9 m cable, for second loop, angular	PQH-L1
	½ UNF, 3-pin	with 1.8 m cable, for second loop, angular	PQH-L2

## Pneumatic connections

I: inlet  
O: outlet  
E: exhaust

## LED status

LED red: supply voltage  
LED green: setpoint/input value equal



Pin	Description
1	TTL output
2	set point +
3	set point ground
4	supply 24V DC
5	supply earth
6	analogue output signal

## connection plan

\*1 at 70 bar supply pressure and open outlet

For further details about double loop see end of the chapter

PDF CAD  
www.aircom.net

\* Product group



Order example:  
PQH1EE-40